

## GEOGRAPHY OF SOILS FROM BARCĂU BASIN

Berchez Octavian\*

\*University of Oradea, Faculty of Environmental Protection, Gen. Magheru st., no.26, 410048, Oradea, Romania, e-mail: berchez\_octavian@yahoo.com

### **Abstract**

*The research was conducted over an area of 3446 km<sup>2</sup>, aimed at identifying units soils in the complex of the Basin Barcău and making maps of soils in a unitary (systems SRTS, WRB-SR-1998 USDA-st-1999). The location of the soil profiles was conducted in accordance with norms soil research. Were identified and mapped 19 soil types belonging to 7 classes of soils and 80 subtypes of soil (according SRTS).*

*The characteristics of the soil units represented on maps and forms tabular correlated with the items investigated in field and laboratory data, obtained after carrying out analyzes of soil samples, allow storage in a database of information for the use and further processing for different purposes applications. For all soils studied were carried out physical and chemical analysis (texture, density, porosity, soil pH, content of calcium carbonate (CaCO<sub>3</sub>), humus content, total nitrogen, index of nitrogen, carbon nitrogen ratio, content in phosphorus, potassium content, the amount of exchangeable bases, total acidity, the degree of base saturation, exchangeable aluminum content).*

**Key words:** type of soil, classification system, taxonomy, soil maps

### **INTRODUCTION**

Being characterized by a great diversity of morphostructural units, local conditions of climate, vegetation and hydrographic basin Barcău presents a wide variety of soil taxonomic units.

The studies of soils in the Barcău basin were conducted during 1997-2014.

To conduct the study were summarized results of research conducted in recent years in soil and natural conditions of training, so that the data obtained can be used in solving practical problems related to exploitation of soil resources. The practical side of importance as the scientific basis enriches the area, broadens the horizon of knowledge creates opportunities for orientation in the complexity of the issues raised, constituting a step towards diversification, soil data interpretation and evaluation purposes based on the results of applied research (Berchez, 2015; Josan, 2004).

### **MATERIAL AND METHOD**

Laboratory data processing and interpretation was conducted according to existing regulations and rules in force (under development Methodology soil studies, 1987). The graphic representations were made in the form of maps and using specialized programs like Microsoft Excel, Global Mapper, Arc Gis. Identification of units taxonomic soil was

conducted in Romanian System of Soil Taxonomy (SRTS), the World Reference Base for Soil Resources (WBR-SR-1998) and the current American System - USDA Soil Taxonomy (USDA-ST-1999).

Based on documentary materials, lab results and observations made in the field they were conducted soil maps, taxonomic systems: SRTS-2003 WRB USDA-SR-1998-ST-1999:

- *Basin Barcău. Administrative-territorial organization. The location field of soil profiles*
- *Soils Barcău Basin. Soil classes (system SRTS)*
- *Soils Barcău Basin. Classes and soil types (system SRTS)*
- *Soils Barcău Basin (WRB system)*
- *Soils Barcău Basin (USDA system)*
- *Soils Barcău Basin. Classes and soil types. Administrative territorial units (system SRTS)*
- *Soils Barcău Basin. Classes and soil types. Morfostructurale relief units ( system SRTS)*

## **RESULTS AND DISCUSSION**

Administrative-territorial Barcău basin (the Romanian) concerning territorial expansion occupy territories located in Bihor, Salaj and Satu Mare. The largest area of the Barcău basin is located in Bihor county, localities Abram, Abrămuș, Balc, Boianu Mare, Buduslău, Biharia, Brusturi, Chișlaz, Cetariu, Ciuhoi, Cherechiu, Curtuișeni, Derna, Diosig Marghita, Popești, Salacea, Săcueni, Sălard, Șimian, Sârbi, Spinuș, Șinteu, Suplacu de Barcău, Tarcea, Tăuteu, Viișoara. North and north-east basin is located in Satu Mare, localities Adrid, Căuaș, Cehal (Cehăluț), Petresti, Pir, Piscolt, Săuca, Santău, Săcășeni, Supur (Supuru de Jos), Tîream, east located in Salaj, localities Camăr, Hălmașd, Marca, Ip, Nușfalău, Plopiș, Valcău de Jos, Sâg.

For research, identification and demarcation of land in the Barcău basin have been executed in the period 1997-2014 a total of 39 main profiles, profiles 170 secondary and 350 control profiles.

The location of the soil profiles was conducted in accordance with norms soil research. Were identified and mapped 19 soil types belonging to 7 classes of soils and 80 subtypes of soil (according SRTS).

Table 1 lists the types and subtypes of soils identified in the Barcău basin.

Table 1.

The types and subtypes of soils identified in Barcău Basin area  
(SRTS, WRB-SR-1998 USDA-st-1999)

Soil type SRTS	Soil subtype SRTS	Soil type WRB-SR	Soil subtypeWR B-SR	Taxonomic unit. USDA- ST	Taxonomic subunit. USDA-ST
Litosol LS	Dystric- LSdi Eutric- LSeu Scheletic- LSqq	Leptosols LP	Dystric-lithic- Leptosols, Dystric Leptosols, Eutri-lithic Leptosols, Eutric Leptosols- Hyperskeleti c Leptosols	grupa Udorthents Ustrthents Cryorthents	Lithic Cryorthents Lithic Udorthents Lithic Ustorthents
Regosol RS	Dystric- RSdi Eutric- RSeu Stagnic- RSst	Regosols RG	Dystric Regosols, Eutric Regosols, Stagnic Regosols	grupa Cryorthents Udorthents Ustorthents	Typic Cryorthents, Typic Udorthents, Typic Ustorthents, Epiaquic Udorthents
Psamosol PS	Dystric- PSdi Eutric- PSeu Molic- PSmo Gleic-PSgc	Arenosols AR	Dystric Arenosols, Eutric Arenosols, Molic Arenosols, Endogleyc Arenosols	grupa Udipsamments Hapludostolls Haplustolls Ustipsamments	Typic Udipsamments Typic Ustipsamments, Psamentic Hapludostolls, Psamentic Haplustolls Endoaquic Udipsamments Endoaquic Ustipsamments

Aluvisol AS	District- ASdi Eutric- ASeu Molic- ASmo Vertic- ASvs Gleic- ASgc Salinic- ASsc Sodic- ASso	Fluvisols FL	Dystric Fluvisols, Eutric Fluvisols, Molic Fluvisols, Vertic Fluvisols, Gleic Fluvisols, Salic Fluvisols, Sodic Fluvisols	grupa Dystrudepts, Udifluvents Ustifluvents	Fluventic Dystrudepts, Typic Udifluvents, Typic Ustifluvents, Mollic Udifluvents, Mollic Ustifluvents, Vertic Udifluvents, Vertic Ustifluvents, Endoaquic Udifluvents, Endoaquic Ustifluvents Endoaquic Ustifluvents (sodic phase)
Entiantr- posol-ET	Mixic- ETmy	Regosols RG	Anthropic Regosols	-	-
Cernoziom CZ	Tipic-CZti Vertic- CZvs Gleic- CZgc Cambic- CZcb Argic- CZar	Cherno- zems-CH	Calcic Chernozems, Vertic Chernozems, Gleic Chernozems, Haplic Chernozems, Luvic Chernozems	grupa Hapludolls, Haplustolls Argiustolls	Entic Haplustolls, Entic Hapludolls, Vertic Haplustolls, Endoaquic Haplustolls, Endoaquic Hapludolls, Typic Haplustolls, Udic Argiustolls
Faeziom FZ	Tipic-FZti	Phaeozems PH	Haplic Phaeozems	grupa Hapludolls, Argiudolls	Entic Hapludolls

Faeoziom FZ	Gleic- FZgc Stagnic- FZst Clino- gleic-FZcl Cambic- FZcb Argic-FZar	Phaeozems PH	Gleyc Phaeozems, Stagni Phaeozems, Stagni-gleyi Phaeozems, Haplic Phaeozems, Luvic Phaeozems		Endoaquic Hapludolls, Epiaquic Hapludolls, Epi- Endoaquic Hapludolls, Typic Hapludolls, Typic Argiudolls
Rendzină RZ	Cambică- RZca Calcarică- RZ Eutrică-RZ	Rendzic- leptosols LPrz	Rendzic Leptosols, Calco- Rendzic Leptosols, Eutri-Rendzi Leptosols	grupa Cryrendoll, Haprendolls	Inceptic-Lithic Cryrendolls, Inceptic-Lithic Haprendolls, Lithic Haprendolls, Lithic Cryrendolls
Eutri- cambosol- EC	Tipic-ECTi Molic- ECmo Vertic- ECvs Gleic- ECgc Stagnic- ECst Litic-ECli Rodic- ECro	Eutric Cambisols CM	Eutric Cambisols, Mollic Cambisols, Eutri-vertic Cambisols, Gleyi-eutric Cambisols, Stagni-eutric Cambisols, Lepti-eutric- Cambisols, Rhodi-eutri Cambisols	grupa Eutrocryepts, Eutrudepts, Haplustepts	Typic Eutrocryepts, Typic Etrudepts, Typic Haplustolls, Vertic Etrudepts, Vertic Haplustepts Endoaquic Etrudepts, Lithic Eutrocryepts, Lithic Etrudepts, Lithic Haplustepts
Distri- cambosol DC	Tipic-DCti  Litic-DCLI Gleic- DCgc	Dystric Cambisols- Cmdy	Distric Cambisols, Lepti- Dystric Cambisols, Gleyi-distric Cambisols	grupa Dystrocryepts, Dystrudepts	Typic Dystrudepts, Lythic Dystrudepts, Endoaquic Dystrudepts

Pre-luvosol EL	Tipic-ELti Roşcat- ELrs Vertic- ELvs Stagnic- ELst Gleic- ELgc	Luvisols LV	Haplic Luvisols, Chromic Luvisols, Vertic Luvisols, Stagnic Luvisols, Gleyic Luvisols	grupa Hapludalfts, Haplustalfts	Typic Hapludalfts, Typic Haplustalfts, Inceptic Hapludalfts, Vertic Hapludalfts, Vertic Haplustalfts, Epiaquic Hapludalfts, Epiaquic Hapludalfts
Luvosol LV	Tipic-LVti Roşcat- LVrs Vertic- LVvr Albic- LVab Stagnic- LVst Gleic- LVgc Lite-LVli	Luvisols LV	Haplic Luvisols, Chromic Luvisols, Vertic Luvisols, Albic Luvisols, Stagnic Luvisols, Gleyc Luvisols, Leptic Luvisols	grupa Hapludalfts Haplustalfts	Typic Hapludalfts, Udic Hapludalfts, Vertic Hapludalfts, Vertic Haplustalfts, Glosic Haplustalfts, Epiaquic Hapludalfts
Vertosol VS	Tipic-VSti Stagnic- VSst, Gleic- VSgc	Vertisols VR	Pellic Vertosols, Haplic Vertosols, Stagni- pellic- Vertosols, Gleyi-pellic- Vertosols, Gleyi- chromic- Vertosols	grupa Hapluderts Haplusterts	Typic Hapluderts, Typic Haplusterts, Epiaquic Hapluderts, Epiaquic- chromic Hapluderts, Endoaquic Hapluderts, Endoaquic Haplusterts, Endoaquic- chromic Hapluderts

Gleiosol GS	District GSdi Eutric- GSeu Molic- GSmo Cernic- GSce Aluvic- GSal Cambic- GScb	Gleysols GL	Dystric Gleysols, Eutric Gleysols, Mollic Gleysols, Mollic Fluvic Gleysols, Haplic Gleysols	grupa Endoqepts Endoaquolls	Typic Endoaqepts- calcic class /phase, Typic Endoaquolls, Mollic Endoaqepts, Fluviaquentic Endoaqepts, Typic Endoaqepts
Stagnosol ST	Tipic-STti  Luvic- STlv Gleic- STgc Albic-STal	Luvisols- LV Cambisols- CM	Stagnic Cambisols, Stagnic Luvisols, Gleyi- stagnic- Cambisols, Stagni-albic Luvisols	grupa Epiqepts Epiqualfs	Typic Epiqepts Typic Epiqualfs Typic Glossaqualfs
Soloneț SN	Tipic-SNti Molic- SNmo Luvic- SNlv Calcaric- SNka	Solonetz- SN	Haplic Solonetz, Mollic Solonetz,	grupa Natrudalfts Natrustolls Natrudolls	Aquic Natrudalfts Aquic Natrudalfts Aquic Natrustolls Aquic Natrudolls
Solonceac SC	Tipic-SCti Calcaric SCka Molic- SCmo	Solonchak s-SC	Haplic Solonchaks, Calcaric- Haplic Solonchaks, Mollic Solonchaks	grupa Haplosalids	Typic Haplosalids Typic Haplosalids- phase calcareous
Erodosol ER	Cambic- ERcb Argic- ERar Calcaric - ERka	Anthrosols AT	Cambisols Eroded phase, Luvisols Eroded phase, Calcaric Regosols- RGca	grupa Udorthents, Ustorthents	Inceptisols Eroded phase Alfisols Eroded phase Typic Udorthents Typic Ustorthents

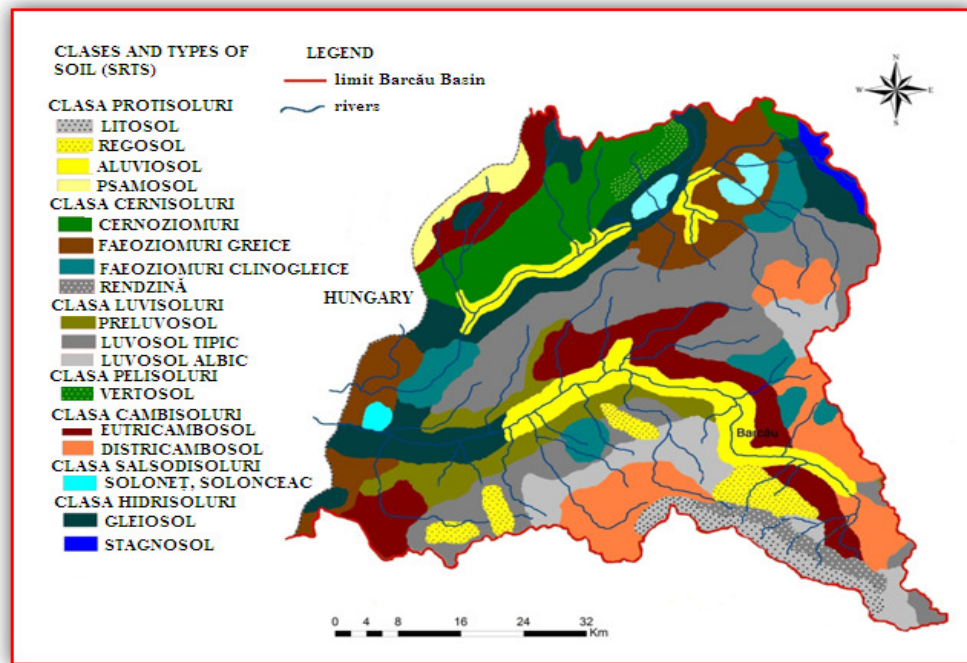


Fig. 1. Barcău Basin. Classes and soil types the system SRTS (processing by the Soil Map of Romania, supplemented and amended)

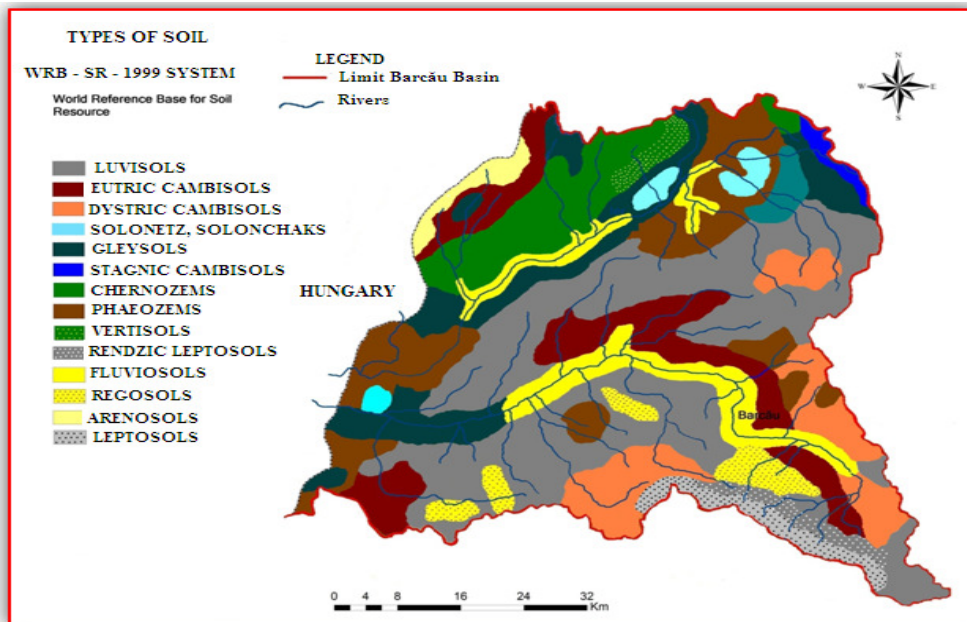
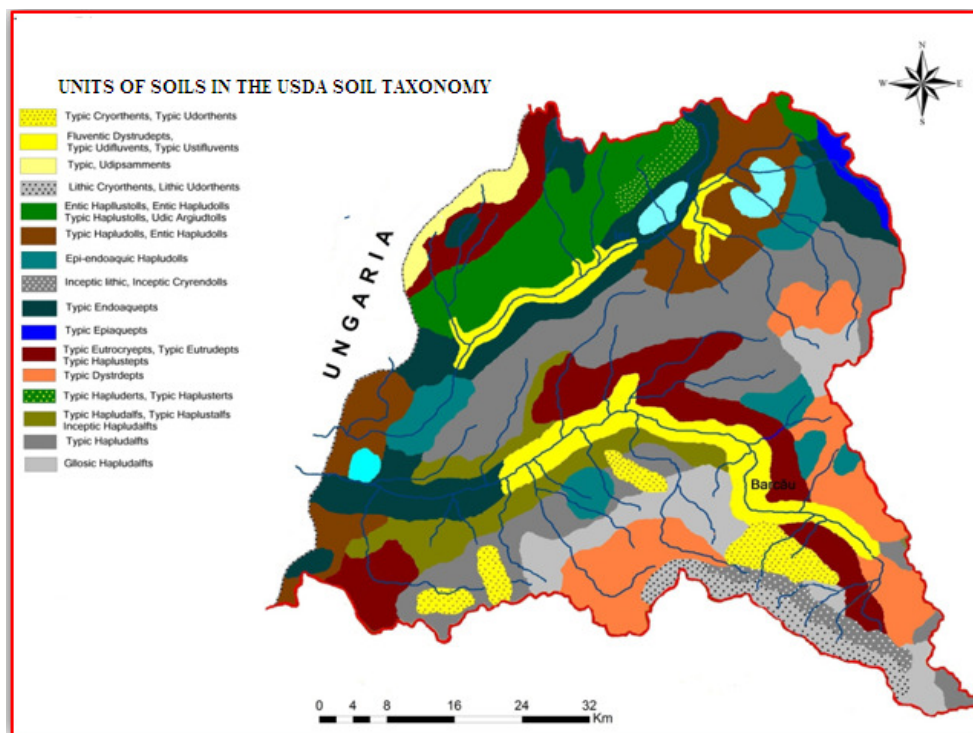


Fig. 2. Barcău Basin. Soil types, the system WRB-SR (processing by the Soil Map of Romania, supplemented and amended)





*Fig. 3. Barcău Basin. Soil types, USDA-ST system  
(processing by the Soil Map of Romania, supplemented and amended)*

## CONCLUSIONS

After researches and correlation with laboratory results were identified researched and mapped 19 soil types belonging to 7 classes of soils: Protisoluri, Cernisoluri, cambisol, luvisols, Pelisoluri, Hidrisoluri, Salsodisoluri and 80 subtypes of soil (SRTS-2003 system). Studies Basin Barcău constitute a real basis in solving less studied or neglected so far, in terms of:

- Making maps of soil
- Conservation and rational use of land
- Knowledge of soil erosion affected areas
- Knowledge of areas affected by salinisation of soils and alkalizing
- Knowledge of soil surfaces showing excess moisture
- Knowledge of degraded areas of natural or artificial soils
- The territorial organization
- Work to restore degraded solurior
- Evaluating and technological characterization of land

## REFERENCES

1. Berchez O., 2015, Cheie pentru determinarea unităților taxonomice de sol la nivel superior: Sistemul Român de Taxonomie a Solurilor, corelarea cu Baza de Referință Mondială pentru Resursele de Sol(World Reference Base for Soil Resource) și Sistemul American (USDA – Soil Taxonomy). Editura Universității din Oradea
2. Ciobanu Gh., Domuța C., 2003, Eroziunea solurilor din Bihor în contextul sistemului de agricultură durabilă. Editura universității din Oradea
3. Cristea Maria, 2004, Riscurile climatice din bazinul hidrografic al Crișurilor, Editura Abaddaba, Oradea.
4. Domuța C., 2005, Irigarea Culturilor. Editura Universității din Oradea
5. Domuța C., 2006, Agrotehnica diferențiată, Editura Universității din Oradea.
6. Domuța C., 2006, Tehnică experimentală, Editura Universității din Oradea
7. Doveny Zoltan, 2010, „Magyarország kistájainak katasztere, MTA Foldrajztudományi Kutatóintézet, Budapest, Hungary.
8. Florea N., Munteanu I., 2012, „Sistemul Român de Taxonomie a Solurilor. Editura Sitech, Craiova.
9. Florea N., Bălăceanu V., Răuță C., Canarache A., 1987, Metodologia elborării studiilorpedologice, Academia de Științe Agricole și Silvicultură, Centrul de material didactic și propagandă agricolă, Redacția de propagandă tehnică și agricolă, București.
10. Guș P., Rusu T., Bogdan Ileana, 2004, Agrotehnica. Editura Risoprint Cluj Napoca
11. Ianoș Gh., 1998, Pedogeografie. Editura Mirton, Timișoara.
12. Ispas St., Murătoareanu G., Leotescu R., Ciulei S., 2006, „Pedologie, cercetarea solului peteren”, Editura Valahia University Press, Târgoviște.
13. Ilieș Dorina, 1998, Resurse minerale utile din regiunea Derna-Voivozi-Suplacu de Barcău, Analele Universității din Oradea, TOM VIII, Oradea.
14. Jeleu I., 2000, Managementul mediului înconjurător, Editura Universității din Oradea
15. Josan N, Sabău N. C., Romocea T., Costea M., Cristea M., Borota D., Berchez O., Nistor S., Vlaicu M., 2004, Hazarde și riscuri naturale și antropice în bazinul Barcăului. Editura Universității din Oradea, Oradea.
16. Man T.E., Sabău N.C., Câmpan Gabriela, Bodog Marinela, 2007, Hidroameliorații vol I, Editura Aprilia Print, Timișoara.
17. Man T.E., Sabău N.C., Câmpan Gabriela, Bodog Marinela, 2007, Hidroameliorații vol II, Editura Aprilia Print, Timișoara.
18. Măhăra Gh., 2001, Meteorologie, Editura Universității din Oradea, Oradea.
19. Petrea Rodica, 2001, Pedogeografie, Editura Universității din Oradea, Oradea.
20. Pop P Gr., 2005, Dealurile de Vest și Câmpia de Vest., Editura Universității din Oradea, Oradea. .
21. Rusu T și colab., 2009, Metode de cercetare ale solului și plantei. Editura Risoprint Cluj Napoca
22. Sabău N.C., Domuța C., Berchez O.,1999, Geneza, degradarea și poluarea solului, vol. I, Editura Universității din Oradea, Oradea.
23. Sabău N.C., Domuța C., Berchez O., 2002 ,Geneza, degradarea și poluarea solului, Vol. II, Editura Universității din Oradea, Oradea.24.
24. Sistemul Român de Taxonomie a solurilor, 2003. Editura Agrosilvică, București.
25. Teaci D., 1980, Bonitatea terenurilor agricole. Editura Ceres București.